

North Carolina Early Voting Trends

November 2, 2020

The accompanying graphs document important trends related to early voting in North Carolina. The data were downloaded from the website of the North Carolina Board of Elections. The data are based on the daily absentee ballot reports, which include early voting records. The results are reported daily.

Note that these statistics pertain to individual ballot returns. A small number of voters may have more than one request or return, because of problems encountered with the ballots. (For instance, if a voter “spoils” a ballot—that is, makes a mistake and asks for a new ballot—both the spoiled and replacement ballot will appear in the dataset.) We have not removed duplicates such as these.

Authors: John A. Curiel

Of Note today

- As of November 1, over 3.6 million North Carolina voters cast their ballots early in person. Approximately 200,000 people voted each day in the week before election day.
 - The total number so far is over three-quarters of the total turnout during the 2016 General Election.
- Cumulatively, the proportion of early voters approximately converged to around one-third for Democratic, Republican, and other/unaffiliated registered voters.
 - The rates of early voting by race are about equal to their proportions of registered voters.

General trends

- A total of 158,810 North Carolinians early voted the weekend before Election Day. This brings the total number of early votes to 3,613,068.

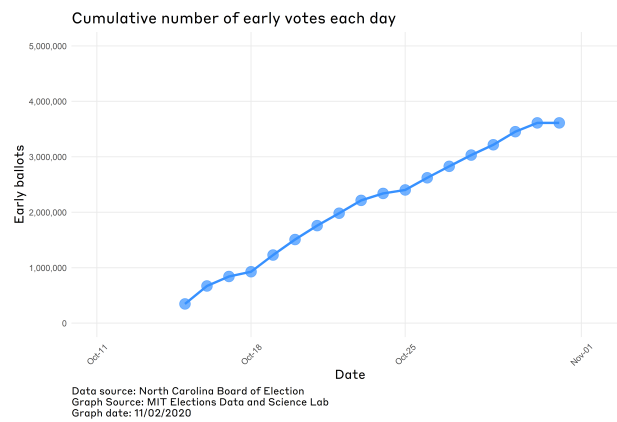
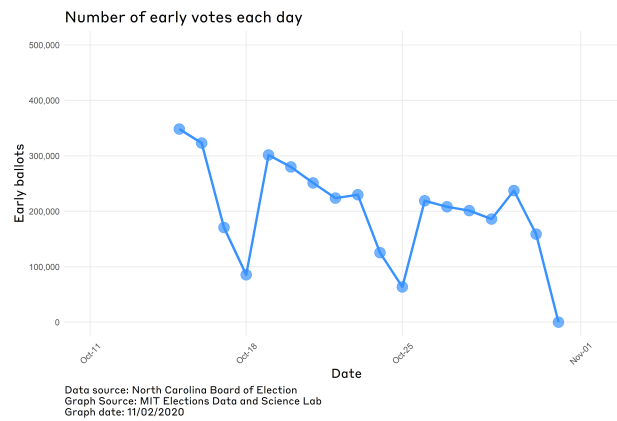
By race

- The breakdown of early voting by party for the weekend before Election Day was White 88,488, Black 36,563, and other race 33,759. Cumulatively, the breakdown of early voting is White 2,346,372, Black 742,640, and other race 524,056.
 - For the weekend before election day, 55.72% of early ballots were cast by Whites, 23.02% from Blacks, and 21.26% from voters of other races. Cumulatively, 64.94% of early ballots were cast by Whites, 20.55% from Blacks, and 14.5% from voters of other races.

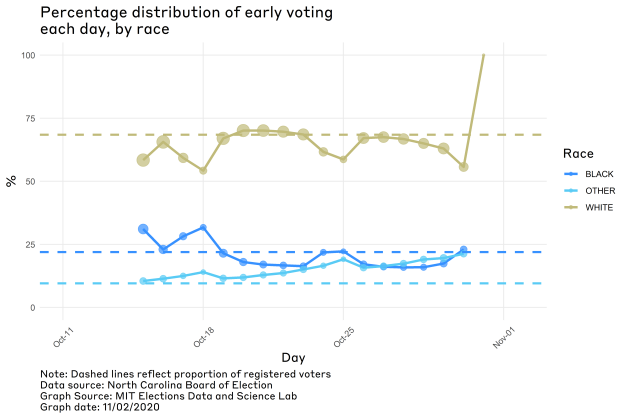
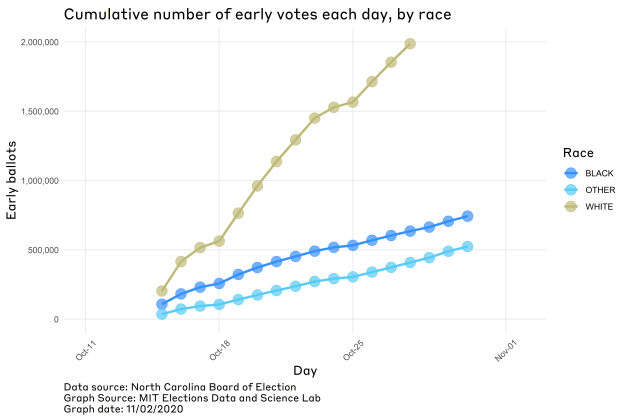
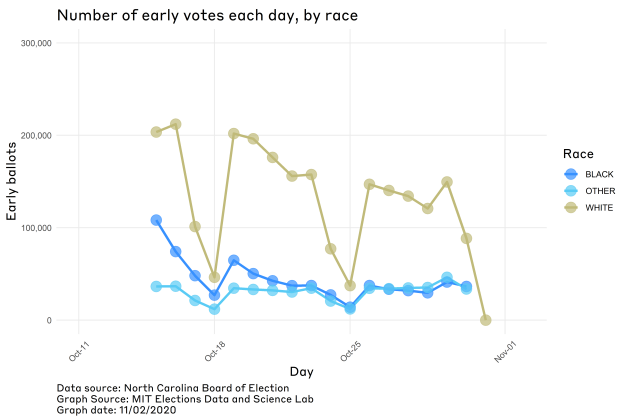
By party

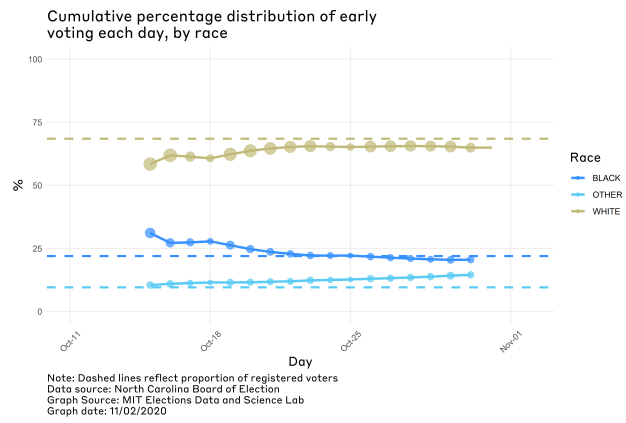
- The breakdown of early voting by party for the weekend before Election Day was Democrat 52,501, Republican 51,920, and other or no party affiliation 54,388. Cumulatively, the breakdown of early voting is Democrat 1,275,919, Republican 1,252,632, and other or no party affiliation 1,084,517.
 - For weekend before Election Day, 33.06% of early ballots cast were by Democrats, 32.69% from Republicans, and 34.25% from voters of other or no party affiliation. Cumulatively, 35.31% of early ballots cast were by Democrats, 34.67% from Republicans, and 30.02% from voters of other or no party affiliation.

Appendix 1: Aggregate early voting trends



Appendix 2: Early voting trends by race





Appendix 3: Early voting trends by party

