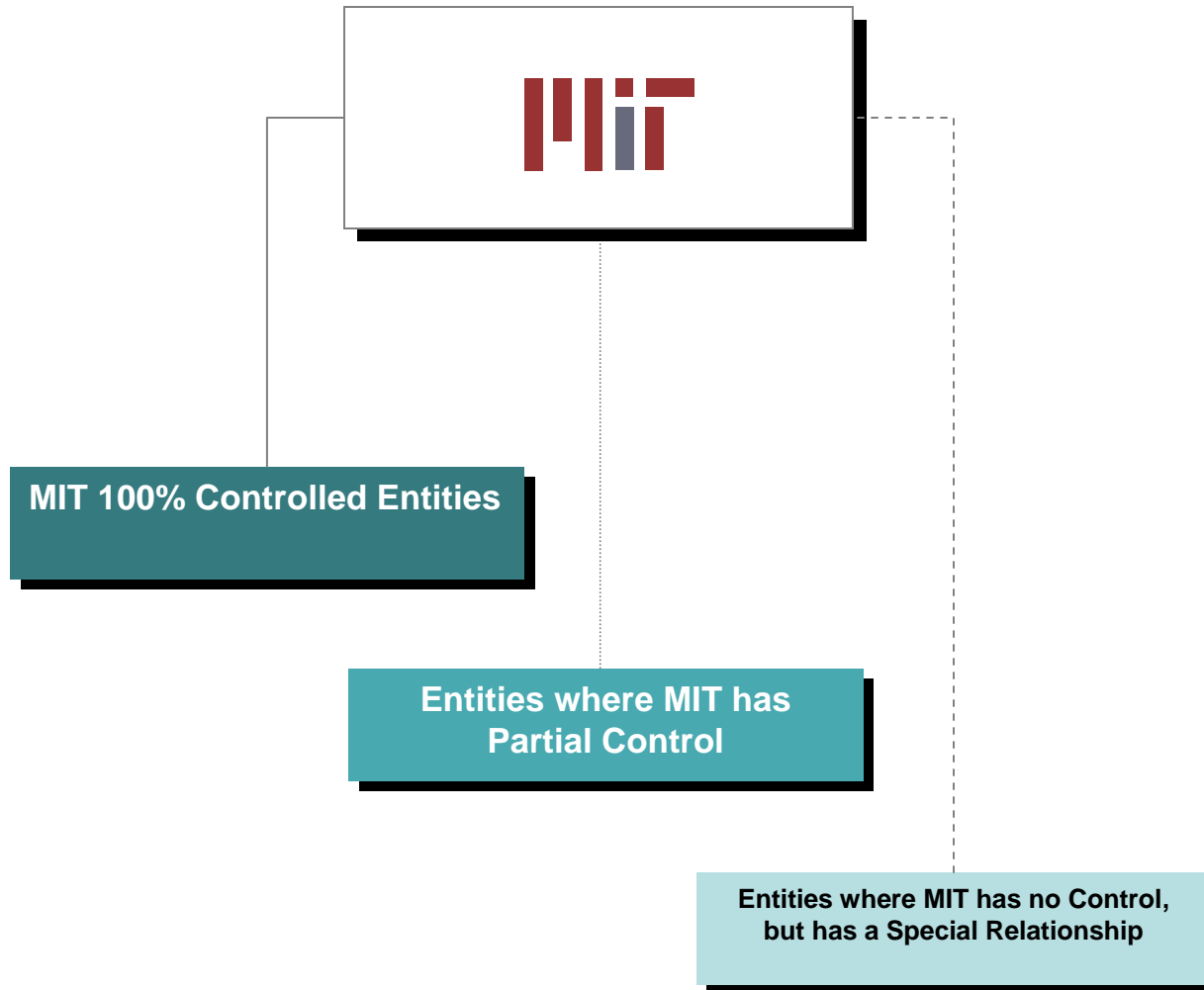


# MIT Legal Entity Organization Chart



# MIT Legal Entity Organization Chart



Including Operating Units That Are a Part of MIT But May Appear to be Separate:

Bates Linear Accelerator Center	Haystack Observatory	Koch Institute	Lincoln Laboratory	McGovern Institute	MIT Investment Management Company	MIT Medical	MIT Press	Picower Institute	Sloan Management Review
---------------------------------	----------------------	----------------	--------------------	--------------------	-----------------------------------	-------------	-----------	-------------------	-------------------------

MIT 100% Controlled Entities

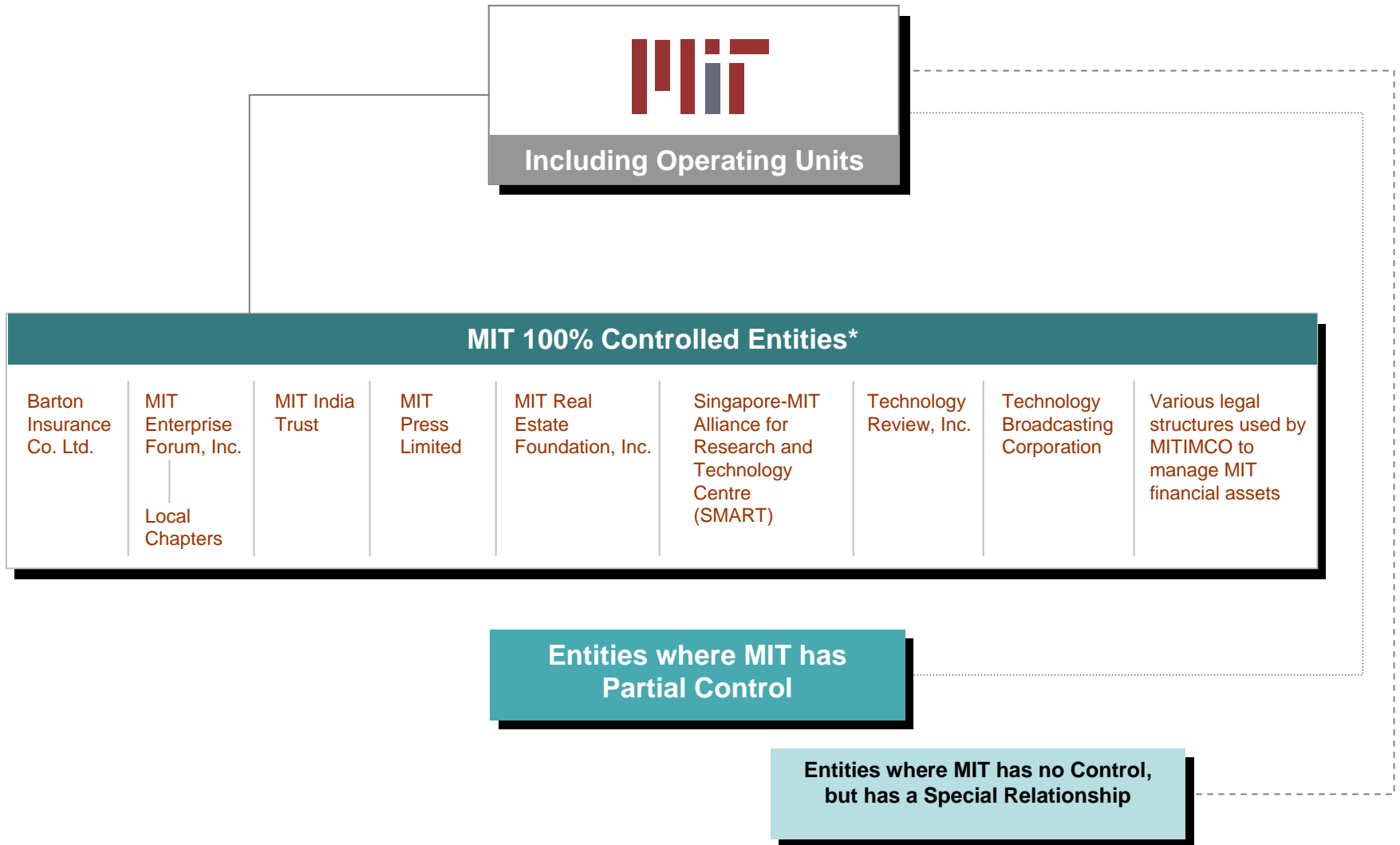
Entities where MIT has Partial Control

Entities where MIT has no Control, but has a Special Relationship

Note: This chart does not depict the relationship of the MIT Alumni Association and MIT.

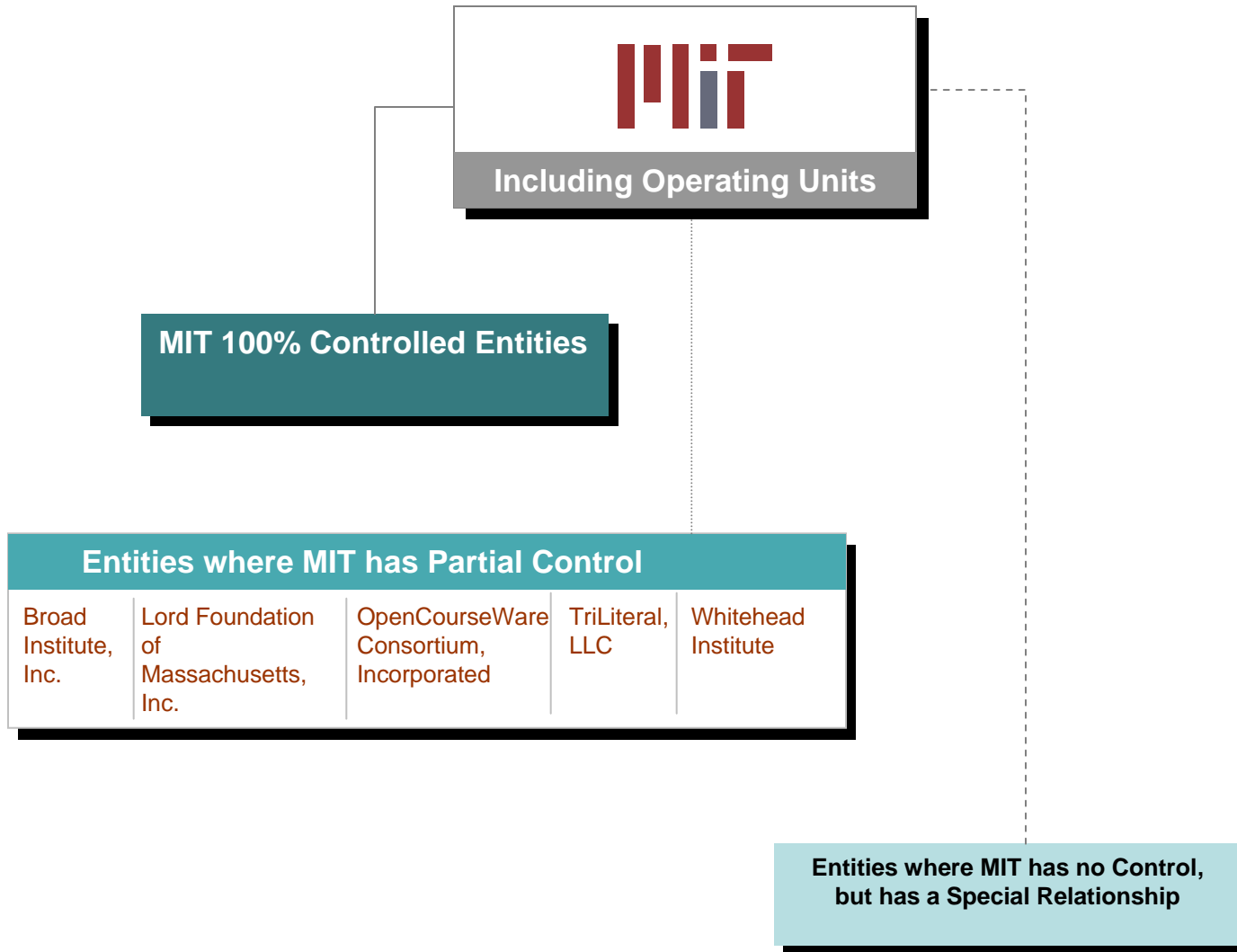


# MIT Legal Entity Organization Chart

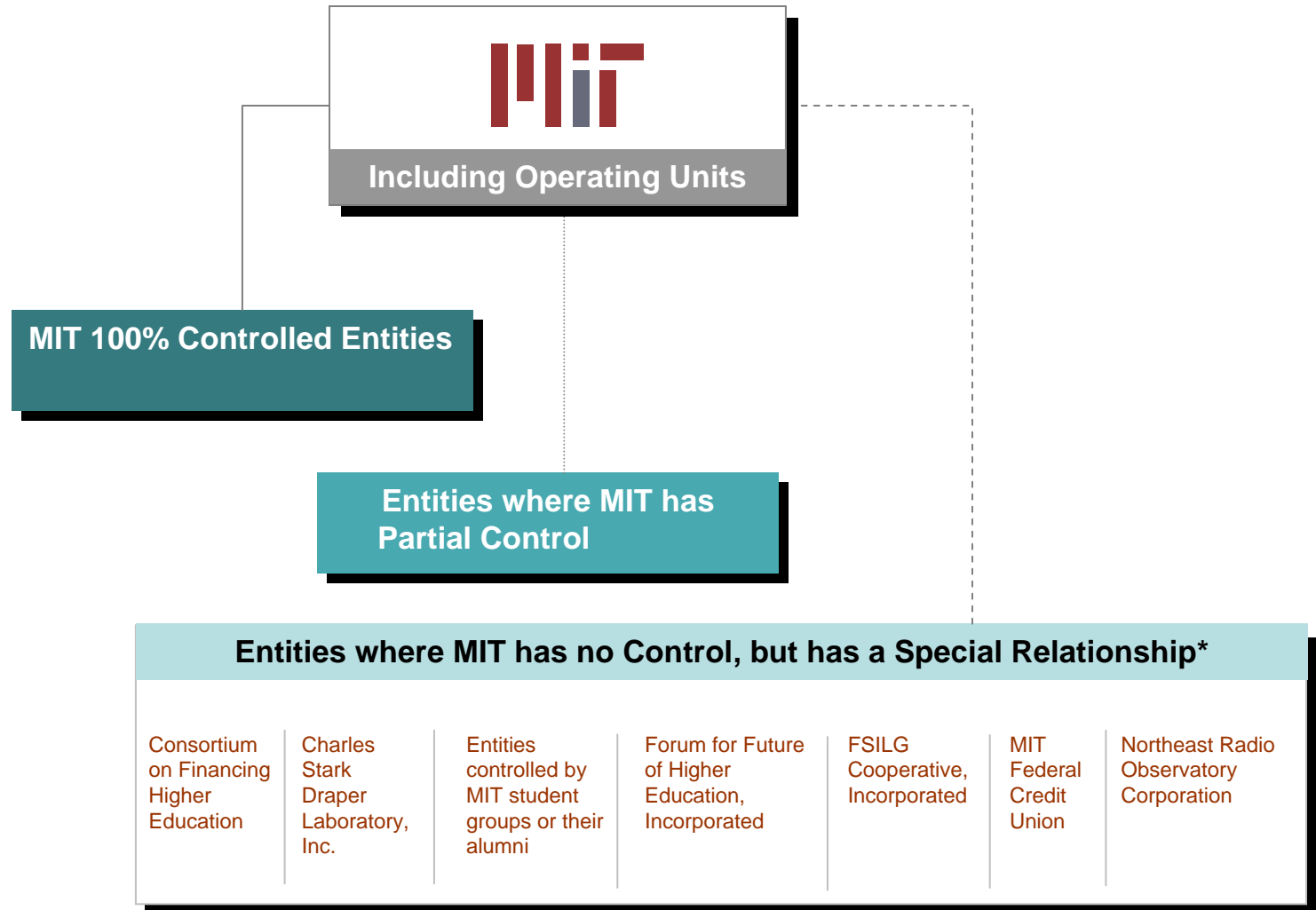


\*"Control" for purposes of this chart means ownership or voting power over the entity.

# MIT Legal Entity Organization Chart



# MIT Legal Entity Organization Chart



\* This category is not intended to describe MIT's many joint programs or research collaborations such as W3C, HST, SMA, the WHOI joint program, or the many organizations of which MIT is a member.

## MIT 100% Controlled Entities (Page 1 of 3)

Name	Type	Purpose	MIT Relationship	Directors
<b>Barton Insurance Co. Ltd.</b>	Bermuda corporation.	MIT's captive insurance company. Provides some of MIT's insurance.	MIT appoints all of the board members.	James Morgan, Mark DiVincenzo, Regina Dugan and Ahron Herring (all MIT employees) plus two Bermuda professional advisors.
<b>MIT Enterprise Forum, Inc.</b>	Massachusetts non-profit corporation. Categorized as a 501(c)(3) charitable organization for tax purposes.	To promote, support and advise technology start-up companies. The Forum produce a series of educational programs open to the MIT community and the public on technology entrepreneurship.	MIT (via the Alumni Association) is the sole member of the entity and appoints all directors. MIT also provides office space and administrative support, including staff.	The Executive Director of the Alumni Association (Judith Cole) and two alumni appointed by the Alumni Association (currently Richard Kivel and David Coombs).
<b>24 local Enterprise Forum chapters around the country and the world (each named the "MIT Enterprise Forum of [location]"</b>	Most chapters are non-profit corporations. Half are incorporated in Massachusetts and half in jurisdictions where chapters are operating. There are also 7 unincorporated chapters, 5 of which are outside of the U.S.	Same as MIT Enterprise Forum, Inc.	MIT Enterprise Forum, Inc. is the sole member of each corporation. Where forum groups are unincorporated, Forum tries to monitor their activities and control use of the name.	The three directors of the MIT Enterprise Forum, Inc. plus one to two local representatives.
<b>MIT India Trust</b>	Charitable trust organized under the laws of the country of India.	To fund MIT activities within India and fellowships for Indian students to study at MIT.	MIT appoints all of the trustees.	Philip Khoury, Subra Suresh and two local alumni/donors (currently Messrs. Adi Godrej and Baba Kalyani).

## MIT 100% Controlled Entities (Page 2 of 3)

Name	Type	Purpose	MIT Relationship	Directors
<b>MIT Press Limited</b>	British company limited by shares.	Handles sales, publicity and distribution of MIT Press publications in Europe, Africa and the Middle East.	MIT appoints the three directors.	MIT employees Ellen Faran and Rebecca Schrader and an MIT Press Limited employee (Ann Sexsmith).
<b>MIT Real Estate Foundation, Inc.</b>	Massachusetts non-profit corporation. Categorized as a 509(a)(3) supporting organization for tax purposes.	To hold and sell real estate for the benefit of MIT.	MIT is the sole member. Board is appointed by MIT.	Officers are currently in place (Seth Alexander, David Chused and an outside lawyer) but director positions currently vacant.
<b>Singapore-MIT Alliance for Research and Technology Centre (SMART)</b>	Singaporean company limited by guarantee and organized for charitable purposes.	To operate a research center in Singapore. Employs local scientists and hosts MIT professors and graduate students for extended periods to conduct research.	MIT is the sole member.	Rafael Reif, Claude Canizares, Subra Suresh, Marc Kastner and four designees of the National Research Foundation of Singapore. (Structure will soon change to two MIT representatives and two NRF representatives.)
<b>Technology Broadcasting Corporation, Inc.</b>	Massachusetts non-profit corporation. Categorized as a 509(a)(2) charitable organization for tax purposes.	To oversee operation of the WMBR radio station and hold its FCC license to broadcast.  The corporation also does business as "WMBR Radio", which is also the name of the student group that handles day-to-day operation of the station.	MIT appoints all members of the corporation. The members then elect from among themselves a board of directors.	Currently comprised of 11 MIT employees, 3 community members, 2 alumni, and 1 student. Professor Henry Holtzman is the President.

## MIT 100% Controlled Entities (Page 3 of 3)

Name	Type	Purpose	MIT Relationship	Directors
<b>Technology Review, Inc.</b>	Massachusetts non-profit corporation. Categorized as a 509(a)(3) charitable organization for tax purposes.	To provide education on science and technology issues, principally through publication of the Technology Review magazine.	MIT is the sole member, and the President of MIT appoints all of the board members subject to certain requirements for representing various components of MIT.	Reid Ashe, Jerome Friedman, Kathryn Liede, Robert Metcalfe, Theresa Stone, Sheila Widnall, Ann Wolpert.
<b>Various legal structures used by MITIMCO to manage MIT financial assets</b>	Includes partnerships, LLCs, and retirement and benefit plans.	Management of MIT financial assets.	All under full control and direction of MIT.	Various MITIMCO appointees.

## Entities where MIT has Partial Control (Page 1 of 2)

Name	Type	Purpose	MIT Relationship	Directors
<b>Broad Institute, Inc.</b>	Massachusetts non-profit corporation. Categorized as a 501(c)(3) charitable organization for tax purposes.	To conduct scientific research in biomedicine.	MIT is one of three members (with Harvard and the Broad Foundation), designates or approves some of the directors and is in a complex contractual operating relationship with the Broad.	Susan Hockfield and Phillip Sharp, plus four directors affiliated with Harvard and the Broad Foundation, one affiliated with Harvard Medical School, the Broad Executive Director, and six outside directors.
<b>Lord Foundation of Massachusetts, Inc.</b>	Massachusetts non-profit corporation. Categorized as a 509(a)(3) supporting organization for tax purposes.	To provide financial support to MIT within areas specified by the charter documents.	MIT appoints four of the Foundation's seven directors, invests a portion of its assets and makes suggestions for grant-making within MIT.	Susan Hockfield, Theresa Stone, Kirk Kolenbrander, and Dana Mead (as well as three appointees of the Jura Corporation, the company founded by Thomas Lord).
<b>OpenCourseWare Consortium, Incorporated</b>	Massachusetts non-profit corporation. Categorized as a 501(c)(3) charitable organization for tax purposes.	To promote the development of OpenCourseWares at universities around the world in order to make educational materials accessible to all.	MIT was the founding organization of the OCW Consortium, and is currently a member and director. It does not have a legal right to these positions however. MIT also provides administrative services and an employee to the entity.	One MIT employee (Stephen Carson of OCW) plus one representative each from nine other member institutions.

## Entities where MIT has Partial Control (Page 2 of 2)

Name	Type	Purpose	MIT Relationship	Directors
<b>TriLiteral, LLC</b>	Limited liability company organized under laws of Delaware.	To provide storage and distribution services to the publishing divisions of MIT, Harvard and Yale. Operations a main warehouse in Rhode Island for this purpose.	MIT owns one-third of the company (Harvard and Yale each own another one-third) and contracts with the company for services to the MIT Press operation.	One MIT employee (Rebecca Schrader, of the MIT Press) plus one representative each from Harvard and Yale.
<b>Whitehead Institute for Biomedical Research</b>	Delaware non-profit corporation. Categorized as a 501(c)(3) charitable organization for tax purposes.	To operate a research and educational institution in biomedical science.	Of 14 directors, MIT appoints 3 and must approve of an additional 3. Whitehead also shares a teaching affiliation with MIT: members of Whitehead have joint appointments as faculty in the MIT department of biology, and MIT students may serve as research assistants at the Whitehead.	Barbara Imperiali, Robert Langer and Phillip Sharp are the MIT appointees. The board is comprised of 18 people total.

## Entities where MIT has no Control but has a Special Relationship (Page 1 of 2)

Name	Type	Purpose	MIT Relationship	MIT Contact Person
<b>Consortium on Financing Higher Education</b>	Unincorporated association of 31 private colleges and universities.	To study and foster discussion of costs of, and financing for, higher education.	MIT is a member, and provides office space, administrative services and an employee to the Consortium.	Kristine Dillon, President of the Consortium.
<b>Charles Stark Draper Laboratory, Inc.</b>	Non-profit research and development laboratory. Categorized as a 501(c)(3) charitable organization for tax purposes.	To conduct scientific, and especially engineering, research on behalf of government and corporate sponsors, especially in areas related to national security.	Draper spun out of MIT in 1973. MIT provides administrative services and benefits to its employees for a fee. MIT graduate students sometimes perform research at Draper.	Thomas Duff, Office of the Provost
<b>Entities Controlled by Student Groups or their Alumni</b>	<p>We know of MIT Hillel Foundation, Inc. and the MIT Outing Club, Inc. There may be others.</p> <p>Many fraternities and sororities are also supported by separate legal entities that own or control the real estate in which the groups reside. These are categorized as 501(c)(7) entities, i.e. non-profit social clubs, and called "house corporations".</p>	To support the mission of the relevant student group. In the case of the house corporations, this includes owning or leasing real estate for the benefit of the members of the fraternity or sorority.	These entities are operated by MIT students and alumni and arise out of MIT activities, but MIT does not control them in any way.	<p>Robert Ferrara, MIT's Director of FSILG Relations for the house corporations.</p> <p>No clear person for other student groups. Student Activities Office is likely best contact.</p>
<b>Forum for the Future of Higher Education, Incorporated</b>	Non-profit research and policy center. Categorized as a 501(c)(3) charitable organization for tax purposes.	The Forum sponsors and conducts research on issues affecting higher education and policy. It is funded by foundations and closely affiliated with Educause, a policy organization.	The Forum is currently housed at MIT, after having been in residence at three previous founding member institutions. MIT provides its three staff and administrative services.	Joel Meyerson, Director

## Entities where MIT has no Control but has a Special Relationship (Page 2 of 2)

Name	Type	Purpose	MIT Relationship	MIT Contact Person
<b>FSILG Co-op</b>	Massachusetts for-profit corporation.	Organized by MIT FSILGs to facilitate group purchasing and provision of services.	The Co-op is often an interface between MIT and the FSILG. MIT provides some limited funding and an office to support the assistance it provides to MIT students.	Robert Ferrara, MIT's Director of FSILG Relations.
<b>MIT Federal Credit Union</b>	Chartered as a federal credit union.	To provide a cooperative bank for the MIT community.	The Credit Union is legally independent from MIT but operates for the benefit of the MIT community. MIT provides space, employees and services all for fair market value.	James Morgan, Office of Major Agreements.
<b>Northeast Radio Observatory Corporation</b>	Delaware non-profit corporation. Categorized as a 501(c)(3) charitable organization for tax purposes.	To operate laboratories and facilities for astronomical research. This entity has professional interest in operations of Haystack, and endeavors to increase availability of the observatory for astronomical research.	MIT is one of 9 institutions with a right to appoint a director. MIT also provides working space (at the Haystack Observatory) and some administrative services.	Colin Lonsdale, Director of Haystack Observatory.