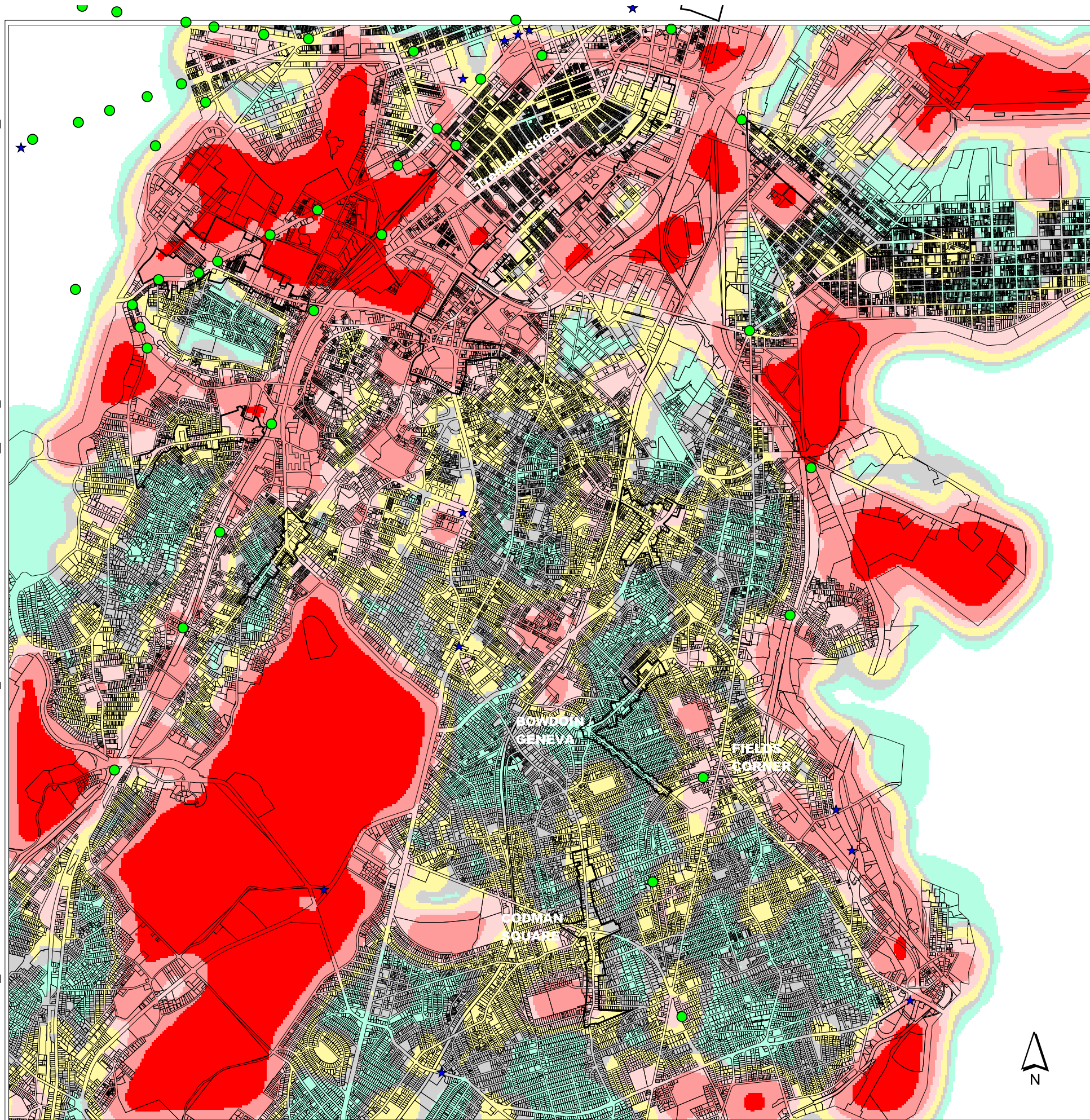


SOCIOECONOMIC TOPOGRAPHY

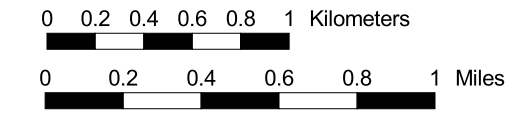
Inner City Economic Development and Geographic Information Systems



**Fig. 3-2-1-2
Tax-Exempt Land Distribution**

Legend

- T stops
- ★ Shopping Centers
- Main Street Program Districts
- Tax Exempt Land Distribution**
- 0 - 5%
- 5 - 10%
- 10 - 20%
- 20 - 33%
- 33 - 99%
- 100%
- No Data



Mapping Data
 Grid Size: 15m x 15m (50feet X 50feet)
 Detection range: Circle with 200m (1/8miles) Radius

Value of cells:
 Percentage of tax-exempt land
 area within the detection range

Data Source:
 Assessors Office, Boston City Government '96

Definition of Tax exempt land:
 Land with landuse "E" in the table of
 State Land Use Classification
 (See Appendix 6-2)

