

SOCIOECONOMIC TOPOGRAPHY

Inner City Economic Development and Geographic Information Systems

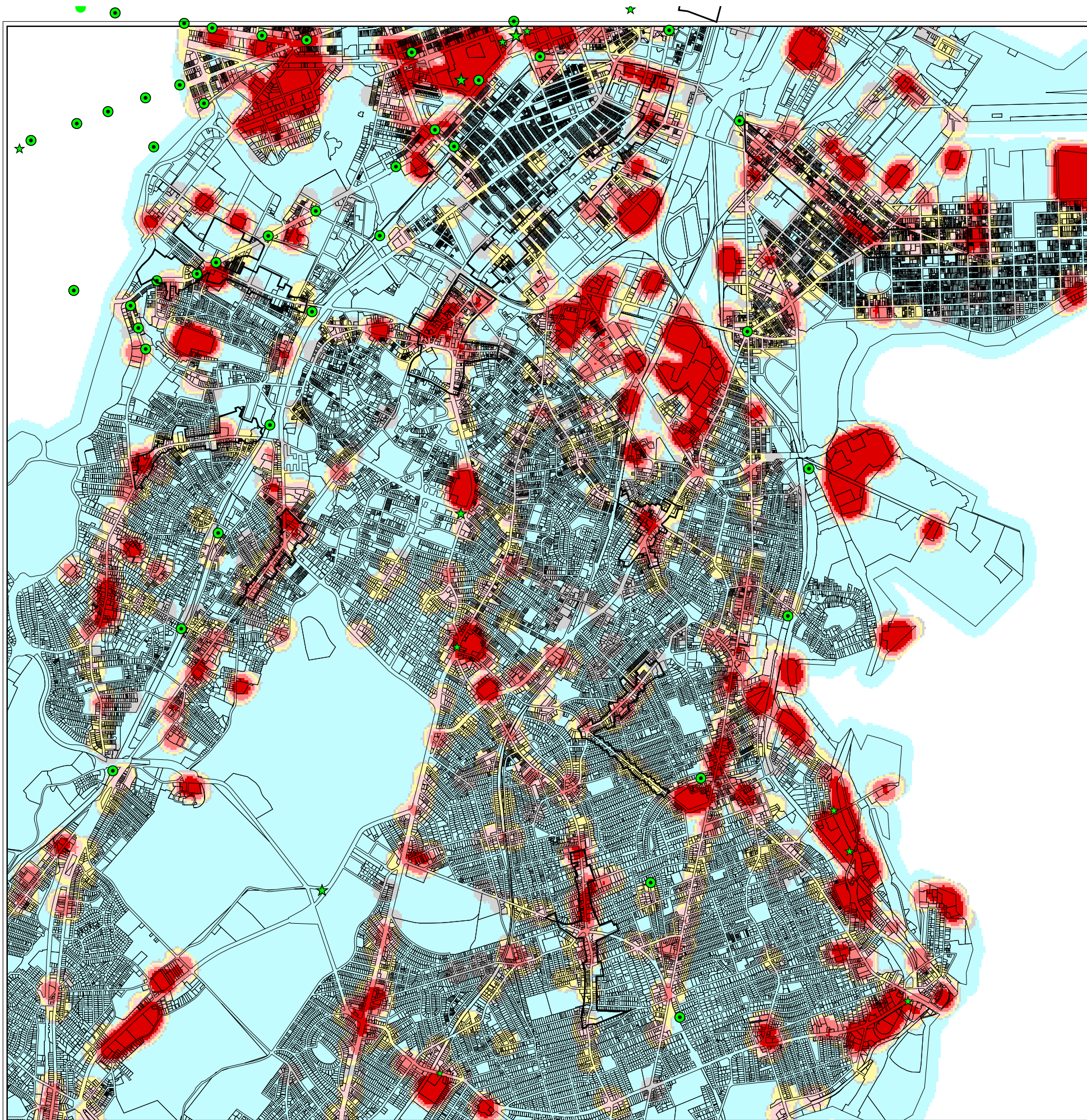


Fig. 3-2-2
Commercial Land Allocation
(within circles of 100m radius)

Legend

- Main Street Program Districts
- T stops
- Shopping Centers
 - ★ Regional Mall
 - ★ Community Center
 - ★ Neighborhood Center
 - ★ Retail
- Commercial land Allocation
 - 0 %
 - 0 - 2.1 %
 - 2.1 - 4.9 %
 - 4.9 - 9.1 %
 - 9.1 - 17.5 %
 - 17.5 - 80.9 %
 - No Data

0 0.2 0.4 0.6 0.8 1 Kilometers



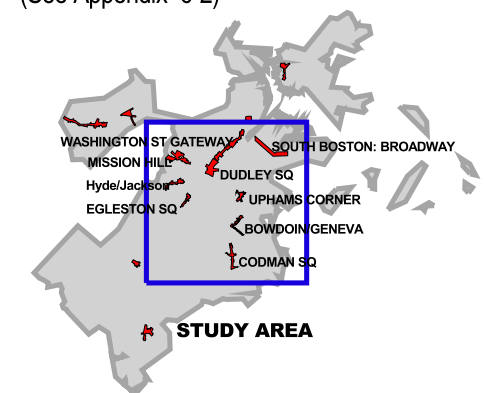
0 0.2 0.4 0.6 0.8 1 Miles



Mapping Data:
 Grid Cell Size: 15m x 15m (50feet x 50feet)
 Detection Area: Circle of 100m (110 yards) Radius

Value of Grid Cells:
 Percentage of commercial land area
 within each detection range

Data Source:
 Assessors Office, Boston City Government '96
 Definition of commercial land:
 land categorized as "C", "CL" or "CC"
 by the State Land Use Classification.
 (See Appendix 6-2)



Computer Resource Lab
 Department of Urban Studies and Planning
 Massachusetts Institute of Technology